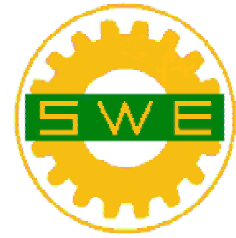


SWE - Kansas City Section Newsletter October - 2003



FY 2004 *Tentative* Calendar



October

- ❖ 9th - 11th - National Conference in Birmingham, AL
- ❖ 23rd - Joint meeting with Missouri Society of Professional Engineers. See more information about this event in this Newsletter.



November

- ❖ 14th - Yoga! Join us at the Anahatta Yoga Center from 7 - 8 p.m.; cost \$5. It is still undecided if we continue the evening with a dinner, at your own expense, at a nearby eatery. Bring a friend!



December

- ❖ Holiday Party and Adopt a Family gift wrapping.



January

- ❖ Pottery



February

- ❖ 21st - 22nd - Region I Conference in Colorado Springs, CO
- ❖ 22nd - 28th - National E-week; Library Presentation or Demonstration - volunteers needed to spearhead this event.



March

- ❖ Work-Life Balance Panel Discussion - volunteers needed to spearhead this event.

April/May

- ❖ TBD; what would you like to see here? Give your suggestions to a SWE board member...

**MSPE Western Chapter
October Dinner Meeting
Joint Meeting with Society of Women
Engineers**

Date: Thursday, October 23, 2003

Place: V's Italiano Ristorante
10819 E. Hwy. 40
(short distance north of I-70)
Independence, Missouri

Time: 4:30 p.m. Board Meeting
5:30 p.m. Social Hour
6:15 p.m. Dinner & Program

Menu: Buffet (Salad, Lasagna, Chicken,
Vegetables, Garlic Toast, and
Dessert)

Cost: \$23.00

**Reservations: Contact Lori Fritz by
email at lfritz@burnsmcd.com or
phone at (816) 333-9400 by Friday,
October 17.**

**See Below for Program & Speaker
Information**



Did you know?

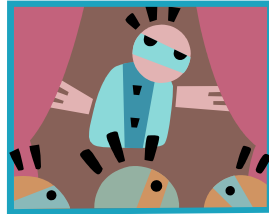
That you are eligible to be a Senior SWE member after 6 years of professional experience? Just update your professional experience information on the <http://www.swe.org> website to get the upgrade!



Got comments? Or new ideas for your KCSWE Newsletter?
Let your editor know!

solanoi@sbcglobal.net

**MSPE Western Chapter
October Dinner Meeting
Joint Meeting with Society of Women Engineers
Program & Speaker Information**



**The Importance of the Railroad Industry to Kansas City
Chuck Mader
Principal, TranSystems Corporation**

Chuck Mader will discuss:

- The history of the railroads in Kansas City;
- How the railroad industry effects the Kansas City metro economy;
- What railroad improvements and changes we can expect in the future.

TranSystems worked with a progressive financing mechanism in the State of Missouri with support from Kansas City; and an innovative design process, to complete a project which has increased the speed of rail traffic through Kansas City, the second largest rail center in the U.S., from 15 miles per hour to a maximum of 50 miles per hour. It has also enhanced the City's prominence in the rail/commodity goods movement industry. In the process, it has eliminated a bottleneck to mainline service of the Union Pacific and Kansas City Southern Railroads; reduced both the inconvenience of delays at crossings serving adjacent businesses and their 1,700 employees, and lessened emissions because of the elimination of train queues at the existing street crossings.

For 20 years, the Kansas City Terminal Railway Company, and its member railroads - the Burlington Northern Santa Fe; the Union Pacific; the Kansas City Southern; the Gateway Western; the I-M Rail Link; and the Norfolk Southern - had tabled the idea of a "flyover," a rail bridge constructed over existing track. They were told it could not be done, especially by one railroad acting alone. TranSystems Corporation showed the group it could be done, and then secured the funding to make the Sheffield Junction Flyover in Kansas City, Missouri, a reality.

KCT's President Bill Somervell comments: "It was a confined, dangerous corridor. When you have a rail corridor under construction or a short track maintenance window, confining traffic through the area impacts all other routes on the terminal. This work involved some 250 trains a day as well as tailoring their traffic patterns to accommodate the workers, so we had situations where only 15-minute to half-hour windows were available to get in there, get something done, and back away from train traffic. It took a lot of coordination amongst KCT, TranSystems and the contractors."



This month in the spotlight...

**Name: Samar (pronounced “Summer”)
Samir El-Khoury (her middle name is her
dad's first name)
Nationality: Lebanese**

Tell us about your background and education:

I'm born and raised in Lebanon. I used to live in Zalka, which is one of Beirut's suburbs. I went to a Jesuit French school till I got to college, when I decided to switch to the American system. I went to the American University of Beirut (AUB) for my bachelor's degree in civil engineering. On my third year, I came to Michigan for a summer internship at Ghaffari's Associates (Engineering and Architecture firm in Dearborn, MI). That's when I decided to finish my BS in Lebanon and come to the US for my MS. I got my MS in Environmental Engineering at the University of Massachusetts, Amherst, MA. I graduated in January 2003 and got offered to work for Carollo Engineers as an environmental engineer in their Kansas City office, MO.

What do you do at work?

I mainly work on water treatment plants hydraulics and design processes. Since we're still a small office (relatively) in Kansas City, I know that I won't be getting this experience anywhere else. My coworkers made it so easy for me to adapt to the move and my new life here.

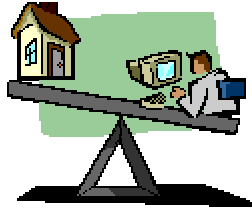
Hobbies...

I travel a lot, now I'm still going around the States, visiting friends and checking out new places. I love the outdoors and so far my favorite season, in the Midwest, is the fall: not too hot, not too cold, just perfect to sit outside, grab a good book and sip some flavored coffee, or just go for a run. I like hiking, going karaoke (although I don't really sing), and dancing.

Favorite ice cream flavor is:

I love Godiva vanilla ice cream with the caramel chocolate hearts: it's just a different world :)

Work-Life Balance Panel March 2004 Committee Members Needed



Members of the committee will plan the March 2004 meeting. Duties, shared by members of the committee, include finding meeting location, selecting panelists/MC, selecting the menu, creating a list of questions/program for the panel discussion, creating brochures and handouts for meeting, inviting SWE students members, SWE professional members, and non-SWE members to the event, and selecting gifts for panelists. Estimated time commitment 2 – 4 hours a month.

Last year's committee members were Sue Gehrt, Hope Piuck, and Jaci Romfo. Use them as a reference to help with any of the activities!

Name

Phone & email

1. _____

2. _____

3. _____

4. _____

5. _____

6. _____



E-Week Library Program Event February 2004

Committee Members Needed

Members of the committee will plan the February 2004 meeting. Duties, shared by members of the committee, include planning a program or demonstration that could include adults, teens, latch-key or home school children, gathering supplies and instructions for the program, and recruiting SWE members to help the day of the event. Coordinate with Jean Hatfield, Associate Director of Program Services for Johnson County Library. Estimated time commitment 2 – 4 hours a month.

Name

Phone & email

1. _____

2. _____

3. _____

4. _____

5. _____

6. _____

For more information & ideas regarding Engineers Week, visit the E-week website at <http://www.eweek.org>